



INSTRUCTIONS AND USER GUIDE

Item No. 856219 Center Dash Mount for Polestar 3

Polestar 3 2024-2026



DO NOT attach anything to the mount face plate until after installing the mount to the dashboard. Doing so makes it more difficult to install the mount to the dash.

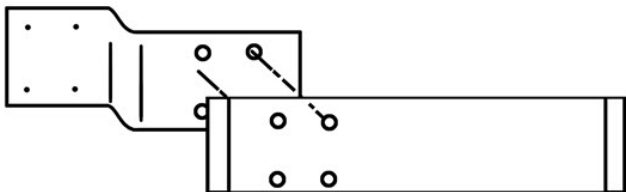


Attention:

Carefully read all instructions and review the images before installing this product. **Do not** attach anything to the mount face plate until after installing the mount to the dashboard. Doing so makes it more difficult to install the mount to the dash. **Also**, our installation instructions are often printed prior to the last year of a ProClip mount listing. The year listing we show on our web site should be the most accurate listing.

Important

Self-installation instructions and advice are provided for your convenience. It is your responsibility to determine if you have the knowledge, skills, and physical ability required to properly perform an installation. ProClip USA, LLC. shall have no liability for damage or injury resulting from the installation or use of any ProClip or third party products. It is your responsibility to ensure that all products are installed in adherence with local laws and regulations and in such a manner as to allow a vehicle to be operated safely and without distraction. ProClip USA, LLC. product warranties do not cover the installation, removal or reinstallation of any product.



STEP 1 OF 4

Installing the Mount:

Attach the faceplate to the mount main body using the enclosed screws.

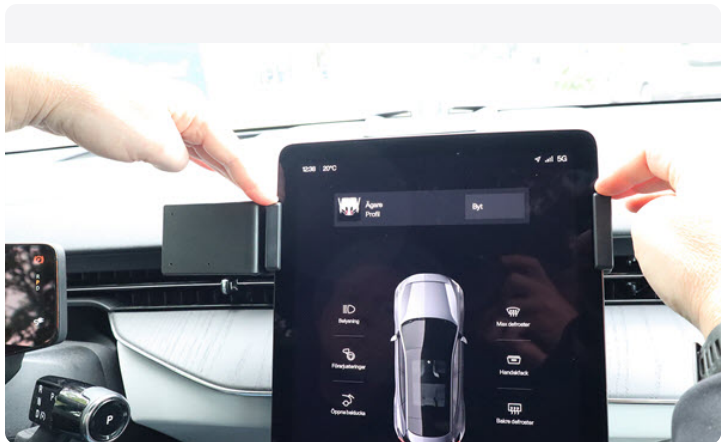
Clean the area where the ProClip will attach. Remove the cover from the adhesive tape.



STEP 2 OF 4

Installing the Mount:

Hold the mount over the screen so the faceplate is on the driver's side of the screen.



STEP 3 OF 4

Installing the Mount:

Slowly but firmly, press down on both sides of the mount to slide it into place on the screen. If the mount sticks; gently flex the sides out to ease the installation. Press downward until the mount is securely in place.



STEP 4 OF 4

The ProClip Mount is in place.

Returns

All returns must be made within thirty (30) days of the delivery date and include proof of purchase, a copy of your original order, or invoice. No products shipped hereunder may be returned without ProClip USA's prior approval. In order to return a product, the buyer must obtain an RMA number (Return Merchandise Authorization Number). Items returned without a valid RMA number may be rejected. **Items that are open, used, damaged, or returned without all original components may have a restocking fee applied.**

Limited Warranty and Liabilities

ProClip warrants that the Products will be free of defects in materials and workmanship for a period of one (1) year from the date of purchase. If any Product should become defective within the warranty period, ProClip, at its option, will replace it, repair it or refund the purchase price. Repair or replacement parts or Products will be furnished on an exchange basis and will either be new or reconditioned. All replaced Products shall become the property of ProClip. Warranty service is available to you by delivering the Product during the warranty period to the company it was purchased from or to ProClip at 4915 Voges Rd., Madison, WI 53718 USA and providing proof of purchase, price and date. If shipped to ProClip, the buyer must first call ProClip at +1 800-296-3212 or e-mail ProClip at returns@proclipusa.com to obtain a return approval and return number. You will bear all shipping, packaging and insurance costs and all other costs, excluding labor and parts, necessary to effectuate repair, replacement or refund under this warranty. For more information on how to obtain warranty service, write, e-mail or telephone ProClip at 4915 Voges Rd., Madison, WI 53718 USA. Tel: +1 800-296-3212, e-mail: returns@proclipusa.com. THIS LIMITED WARRANTY DOES NOT EXTEND TO ANY PRODUCT WHICH HAS BEEN DAMAGED AS A RESULT OF ACCIDENT, MISUSE, ABUSE OR AS A RESULT OF UNAUTHORIZED SERVICE. THIS WARRANTY IS IN LIEU OF ALL OTHER EXPRESS WARRANTIES FOR THIS PRODUCT. IMPLIED WARRANTIES, INCLUDING THOSE OF MERCHANTABILITY, FITNESS FOR A PARTICULAR PURPOSE AND NON-INFRINGEMENT, SHALL HAVE NO GREATER DURATION THAN 1 YEAR FROM THE DATE OF PURCHASE. IN THE EVENT THIS PRODUCT BECOMES DEFECTIVE DURING THE WARRANTY PERIOD, THE PURCHASER'S EXCLUSIVE REMEDY SHALL BE REPAIR, REPLACEMENT OR REFUND AS PROVIDED ABOVE. IN NO EVENT SHALL PROCLIP BE LIABLE FOR INCIDENTAL OR CONSEQUENTIAL DAMAGES, INCLUDING WITHOUT LIMITATION LOSS OF PROPERTY, ARISING FROM BREACH OF ANY EXPRESSED OR IMPLIED WARRANTY. PROCLIP DISCLAIMS ALL WARRANTIES, EXPRESS OR IMPLIED, OTHER THAN THOSE SET FORTH ABOVE. IN NO EVENT WILL PROCLIP BE LIABLE TO YOU OR ANY THIRD PARTY FOR ANY INCIDENTAL OR CONSEQUENTIAL DAMAGES, INCLUDING, WITHOUT LIMITATION, INDIRECT, SPECIAL, PUNITIVE, OR EXEMPLARY DAMAGES, INCLUDING ATTORNEY FEES ARISING OUT OF THE USE OF OR THE INABILITY TO USE THE PRODUCTS, OR FOR ANY CLAIM BY ANY OTHER PARTY, EVEN IF PROCLIP HAS BEEN ADVISED OF THE POSSIBILITY OF SUCH DAMAGES.

Regulatory information: www.proclipusa.com/regulatory.html

ProClip USA, LLC

4915 Voges Road • Madison, WI 53718 • USA
Office: +1 608-807-5230 • Fax: +1 920-372-0066
Toll free: 800-296-3212 • www.proclipusa.com